

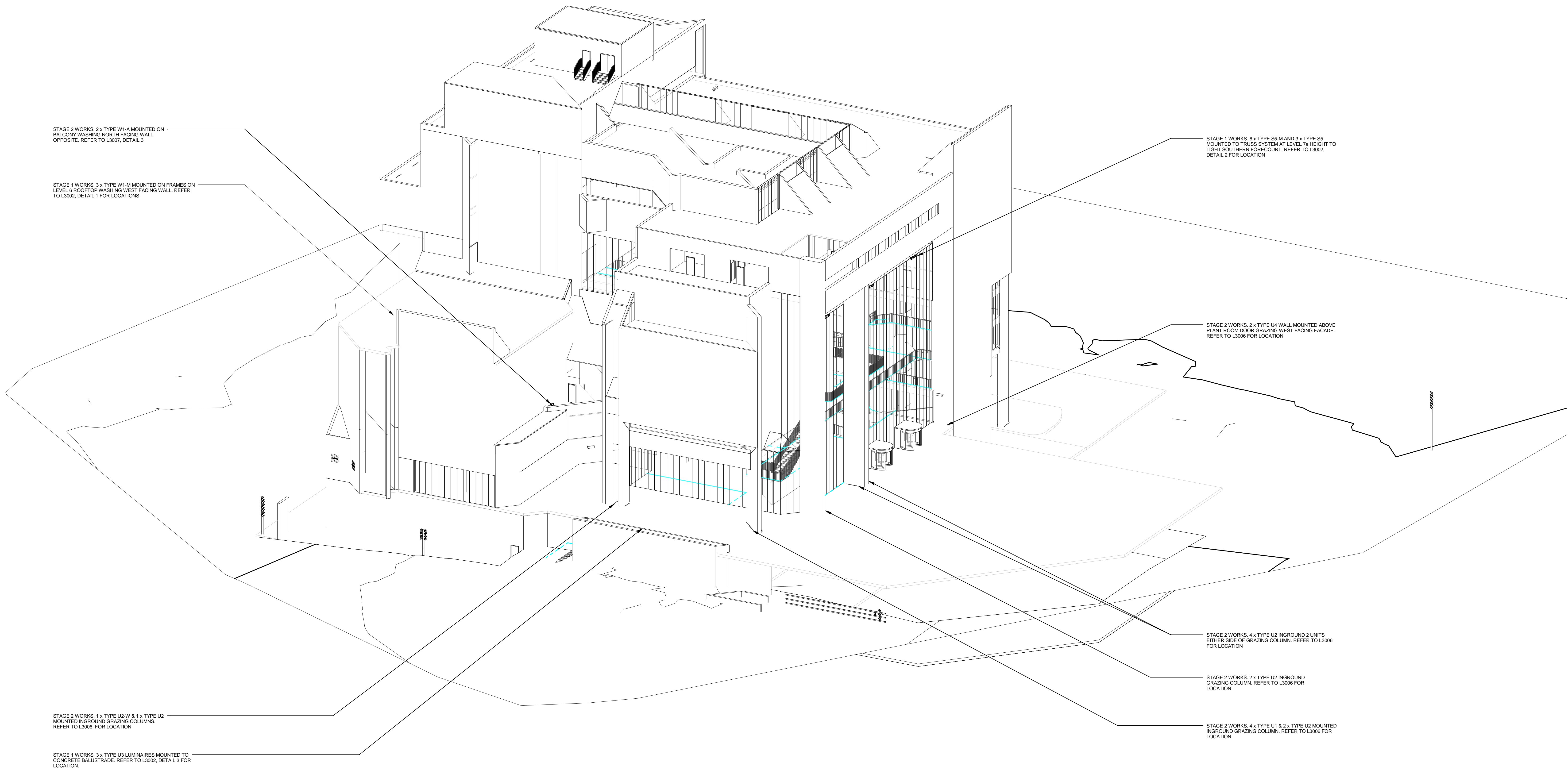
STATUS

TENDER ISSUE

NOTES

1. THE ISOMETRIC DRAWINGS ENCOMPASS THE ENTIRE SCOPE OF LIGHTING WORKS PACKAGE 1 AND 2, TO COMMUNICATE THE OVERALL LIGHTING DESIGN. FOR INDIVIDUAL PACKAGES REFER TO THE RELEVANT LAYOUTS AND SECTIONS OF SPECIFICATIONS.

AMENDMENTS		
REV	DESCRIPTION	DATE
A	TENDER ISSUE	20.02.14
B	REVISED TENDER ISSUE	15.04.14
C	REVISED TENDER ISSUE	06.09.14



Copenhagen
London
Sydney
Hong Kong
New York

8, 9 Castlereagh St.
Sydney, NSW, 2000, Australia
ABN 50 001 189 037
t: +61 / 02 9967 2200
e: info@steensenvarming.com

STEENSEN VARMING


HCA

High Court of Australia
Canberra ACT
for and on behalf of
The National Capital
Development Commission

PROJECT
HIGH COURT OF AUSTRALIA
FACADE LIGHTING UPGRADE

PARKES PL. PARKES - ACT

DRAWING TITLE
LIGHTING
ISOMETRIC VIEW - LUMINAIRE
LOCATIONS VIEWED FROM
SOUTHWEST

				<div>A0</div>
CREATED	DRAWN	DESIGNED	CHECKED	
DEC'13	AZ	SL	EU	
APPROVED		SCALE		NORTHPOINT
EU				
PROJECT No.		DRAWING No.		REVISION
13771		L1003		C